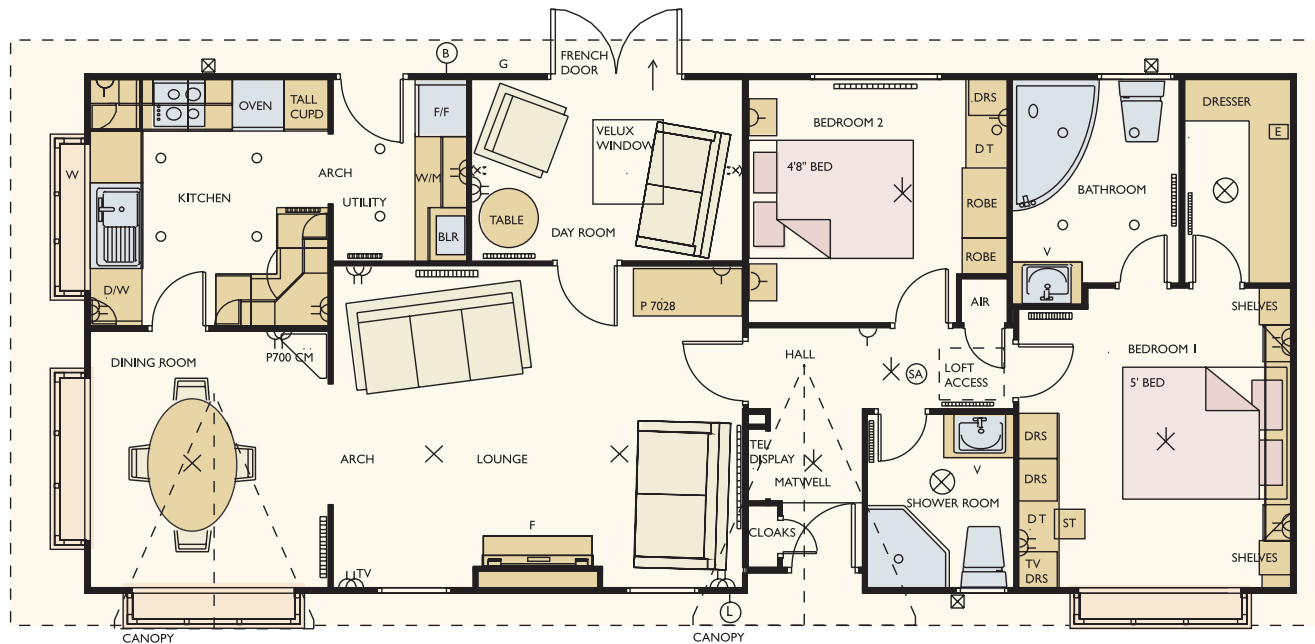


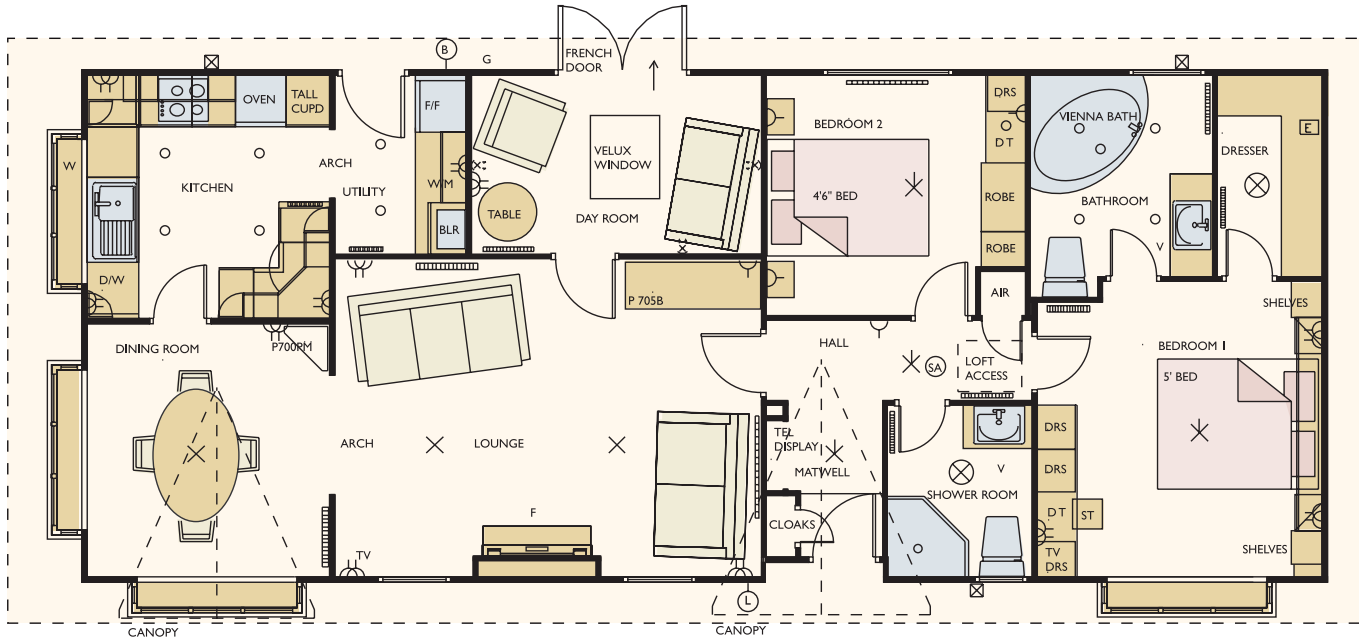
Overall size 13.41m x 6.15m (44' x 20'2") excluding roof

Lounge	4.42m x 3.73m (14'6" x 12'3")	Utility	1.55m x 2.10m (5'1" x 6'11")	Bedroom 2	2.93m x 2.82m (9'7" x 9'3")
Dining	2.65m x 2.95m (8'8" x 9'8")	Shower	1.71m x 2.03m (5'7" x 6'8")	Day Room	2.82m x 2.10m (9'3" x 6'11")
Hall	1.07m x 3.08m (3'6" x 10'1")	Bathroom	1.84m x 2.36m (6'0" x 7'9")	Dresser	1.23m x 2.36m (4'0" x 7'9")
Kitchen	2.65m x 2.87m (8'8" x 9'5")	Bedroom I	2.98m x 3.82m (9'9" x 12'6")		



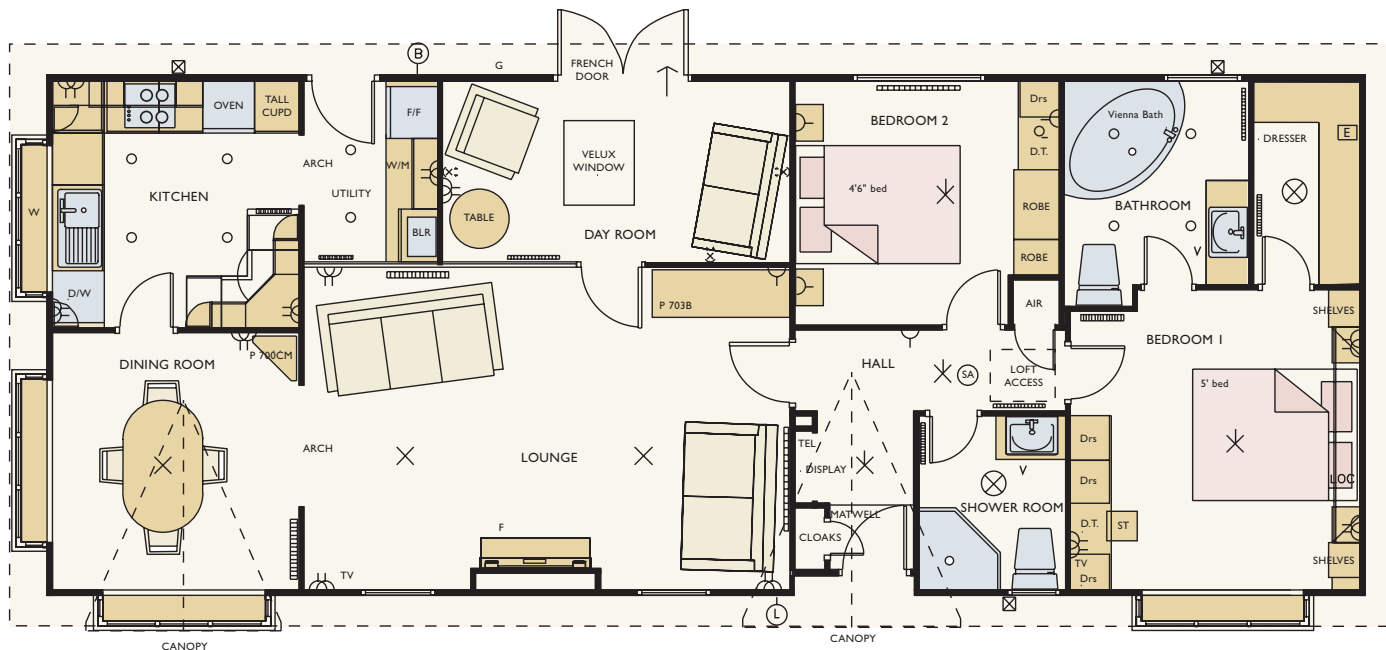
Overall size 14.02m x 6.15m (46' x 20'2") excluding roof

Lounge	4.75m x 3.73m (15'7" x 12'3")	Utility	1.55m x 2.10m (5'1" x 6'11")	Bedroom 2	3.00m x 2.82m (9'10" x 9'3")
Dining	2.75m x 2.95m (9'0" x 9'8")	Shower	1.71m x 2.03m (5'7" x 6'8")	Day Room	3.15m x 2.10m (10'4" x 6'11")
Hall	1.07m x 3.08m (3'6" x 10'1")	Bathroom	1.94m x 2.36m (6'4" x 7'9")	Dresser	1.23m x 2.36m (4'0" x 7'9")
Kitchen	2.75m x 2.87m (9'0" x 9'5")	Bedroom 1	3.15m x 3.82m (10'4" x 12'6")		



Overall size 14.63m x 6.15m (48' x 20'2") excluding roof

Lounge	5.01m x 3.73m (16'5" x 12'3")	Utility	1.55m x 2.10m (5'11" x 6'11")	Bedroom 2	3.05m x 2.82m (10'0" x 9'3")
Dining	2.85m x 2.95m (9'4" x 9'8")	Shower	1.71m x 2.03m (5'7" x 6'8")	Day Room	3.41m x 2.10m (11'2" x 6'11")
Hall	1.12m x 3.13m (3'8" x 10'3")	Bathroom	2.14m x 2.36m (7'0" x 7'9")	Dresser	1.23m x 2.36m (4'0" x 7'9")
Kitchen	2.85m x 2.87m (9'4" x 9'5")	Bedroom 1	3.35m x 3.82m (11'0" x 12'6")		



Overall size 15.24m X 6.15m (50' x 20'2") excluding roof

Lounge	5.62m x 3.73m (18'5" x 12'3")
Dining	2.85m x 2.95m (9'4" x 9'8")
Hall	1.12m x 3.13m (3'8" x 10'3")
Kitchen	2.85m x 2.87m (9'4" x 9'5")

Utility	1.55m x 2.10m (5'1" x 6'11")
Shower	1.71m x 2.03m (5'7" x 6'8")
Bathroom	2.14m x 2.36m (7'0" x 7'9")
Bedroom I	3.35m x 3.82m (11'0" x 12'6")

Bedroom 2	3.05m x 2.82m (10'0" x 9'3")
Day Room	4.01m x 2.10m (13'2" x 6'11")
Dresser	1.23m x 2.36m (4'0" x 7'9")