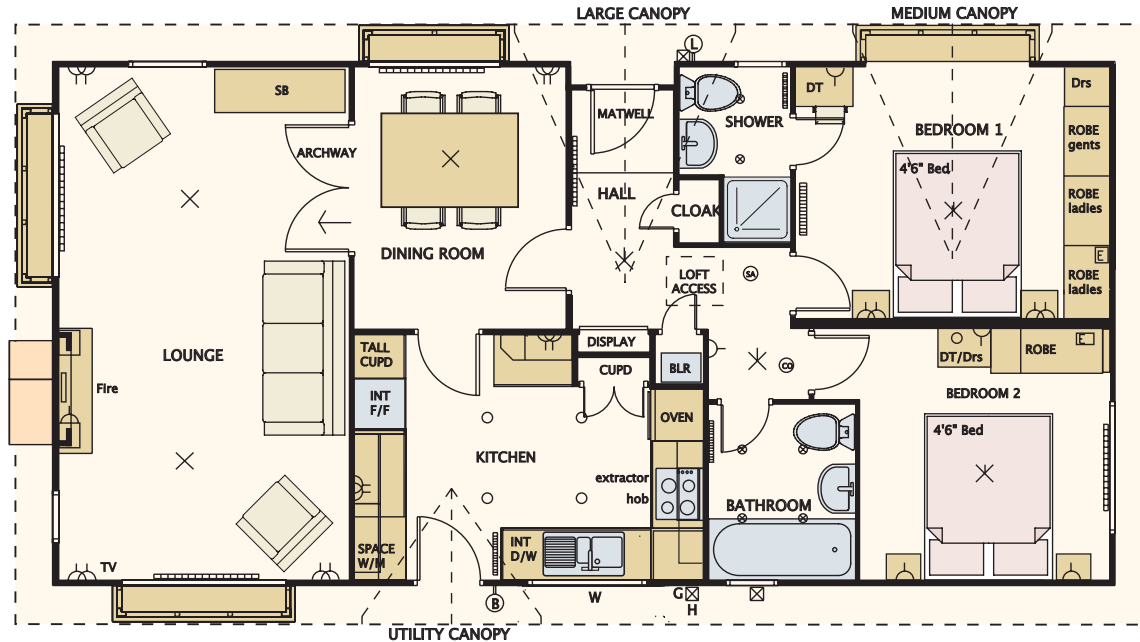


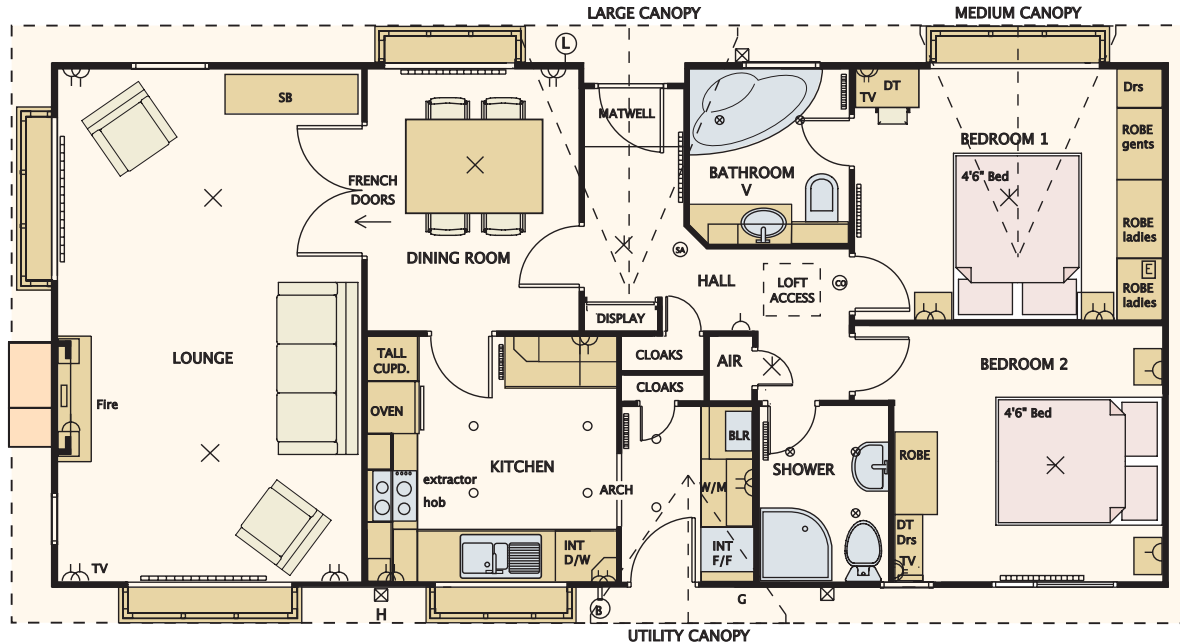
Overall size 11.58m x 6.15m (38' x 20'2") excluding roof

Lounge	3.33m x 5.89m (10'11" x 19'4")	Kitchen	3.21m x 2.86m (10'7" x 9'5")	Bedroom 2	3.00m x 2.88m (9'10" x 9'5")
Dining	2.43m x 2.97m (8'0" x 9'9")	Bathroom	1.70m x 2.01m (5'7" x 6'7")		
Hall	1.03m x 2.17m (3'5" x 7'1")	Bedroom 1	4.04m x 2.88m (13'3" x 9'5")		



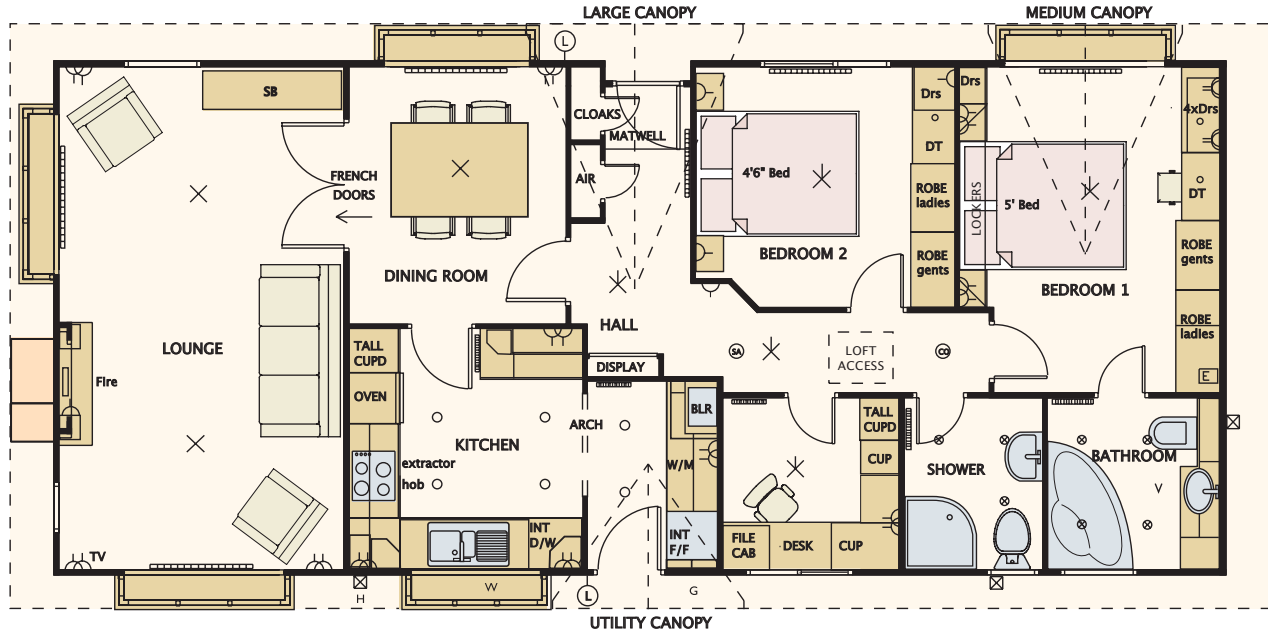
Overall size 12.19m x 6.15m (40' x 20'2") excluding roof

Lounge	3.32 x 5.89 (10'11" x 19'4")	Kitchen	4.02 x 2.86 (13'2" x 9'5")	Bedroom 1	3.66 x 2.88 (12'0" x 9'5")
Dining	2.44 x 2.97 (8'0" x 9'9")	Bathroom	1.70 x 2.01 (5'7" x 6'7")	Bedroom 2	2.82 x 2.88 (9'3" x 9'5")
Hall	1.22 x 2.47 (4'0" x 8'1")	Shower	1.15 x 2.01 (3'9" x 6'7")		



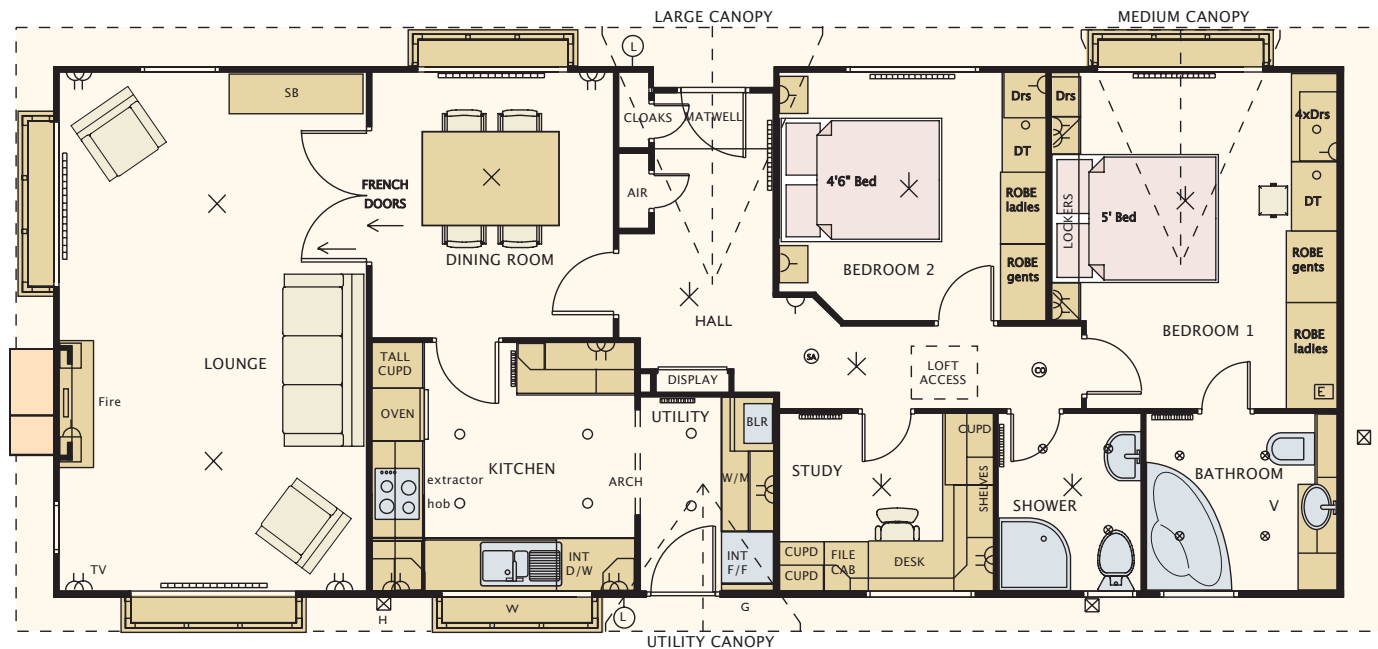
Overall size 12.80m x 6.15m (42' x 20'2") excluding roof

Lounge	3.34m x 5.89m (11'0" x 19'4")	Kitchen	2.92m x 2.86m (9'7" x 9'5")	Bathroom	1.85m x 2.02m (6'1" x 6'7")
Dining	2.43m x 3.00m (8'0" x 9'10")	Utility	1.53m x 2.05m (5'0" x 6'4")	Bedroom 1	3.66m x 2.88m (12'0" x 9'5")
Hall	1.13m x 3.28m (3'9" x 10'9")	Shower	1.61m x 2.02m (5'3" x 6'7")	Bedroom 2	3.01m x 2.88m (9'11" x 9'5")



Overall size 13.72m x 6.15m (45' x 20'2") excluding roof

Lounge	3.17m x 5.89m (10'5" x 19'4")	Utility	1.66m x 2.21m (5'5" x 7'3")	Bedroom 2	3.09m x 2.82m (10'3" x 9'3")
Dining	2.53m x 3.00m (8'4" x 10'10")	Shower	1.61m x 2.02m (5'3" x 7'7")	Study	2.04m x 2.02m (7'10" x 7'7")
Hall	1.20m x 4.70m (4'0" x 15'5")	Bathroom	2.02m x 2.02m (7'8" x 7'8")		
Kitchen	2.74m x 2.82m (9'0" x 9'3")	Bedroom 1	3.10m x 3.81m (10'3" x 12'6")		

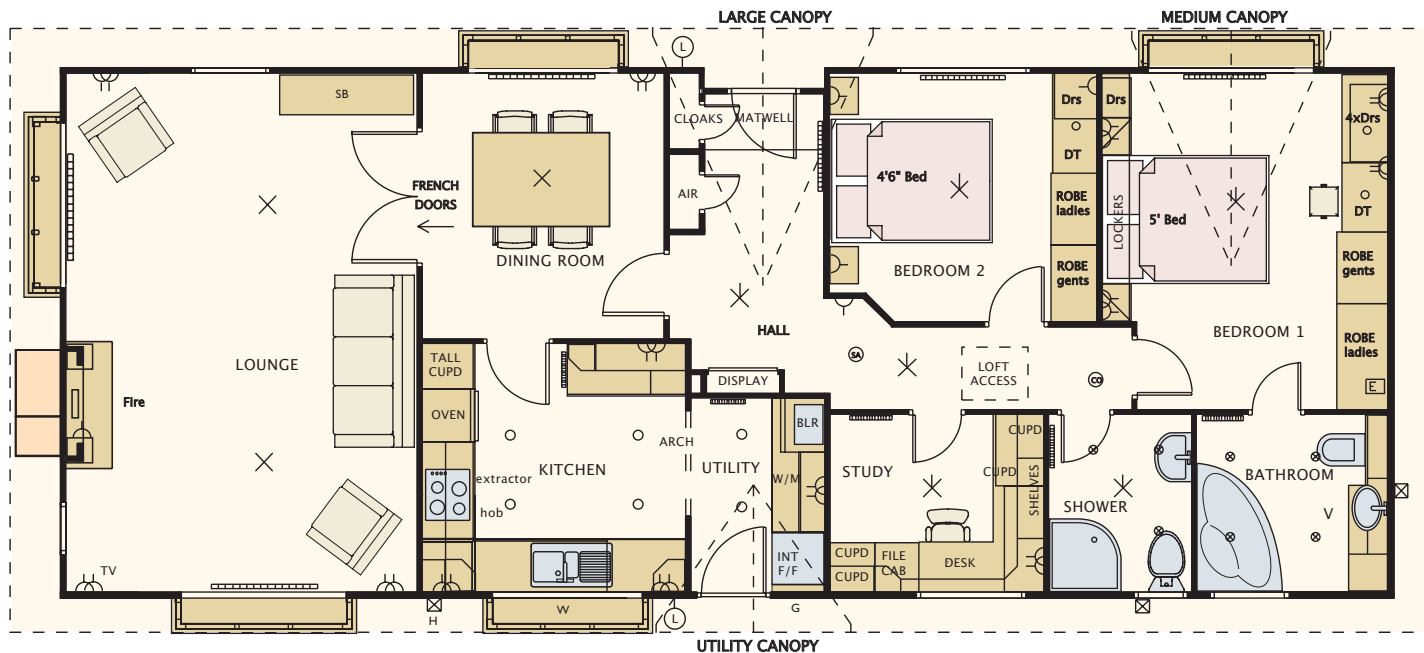


Overall size 14.63m x 6.15m (48' x 20'2") excluding roof

Lounge	3.47m x 5.89m (11'5" x 19'4")	Utility	1.52m x 2.21m (5'0" x 7'3")	Bedroom 2	3.04m x 2.82m (10'0" x 9'3")
Dining	2.73m x 3.00m (8'11" x 9'10")	Shower	1.61m x 2.02m (5'3" x 6'7")	Study	2.40m x 2.02m (7'11" x 6'7")
Hall	1.33m x 4.72m (4'5" x 15'6")	Bathroom	2.16m x 2.02m (7'1" x 6'7")		
Kitchen	3.00m x 2.83m (9'10" x 9'3")	Bedroom 1	3.24m x 3.81m (10'8" x 12'6")		

50'

the linden cottage



Overall size 15.24m x 6.15m (50' x 20'2") excluding roof

Lounge	4.08m x 5.89m (13'5" x 19'4")	Utility	1.52m x 2.21m (5'0" x 7'3")	Bedroom 2	3.04m x 2.82m (10'0" x 9'3")
Dining	2.73m x 3.00m (8'11" x 9'10")	Shower	1.61m x 2.02m (5'3" x 6'7")	Study	2.40m x 2.02m (7'11" x 6'7")
Hall	1.33m x 4.72m (4'5" x 15'6")	Bathroom	2.16m x 2.02m (7'1" x 6'7")		
Kitchen	3.00m x 2.83m (9'10" x 9'3")	Bedroom 1	3.24m x 3.81m (10'8" x 12'6")		

Nominal sizes